



### Sport Brake Lever Part Number BRC552 or BRF352

Congratulations on your purchase of an ASV Sport Street bike lever! ASV Inventions recommends that this lever be installed by a certified mechanic. ASV Inventions, Inc. accepts no liability for malfunctions because of improper installation. Please use the chart below to confirm your year make and model before attempting installation

This ASV Sport front brake lever will only fit the following motorcycles:

HUSQVARNA	YEAR
701 Enduro / LR	17-21
701 Supermoto	17-21
Svartpilen 701	18-21

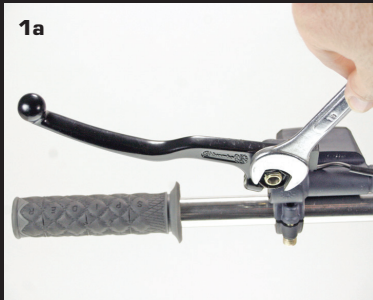
KTM	YEAR
Adventure 1050 / 1090 R	17-19
Duke 690	14-18
Enduro 690 / 690 R	14-21
Supermoto 690 SMC / SMC R	08-21

DUCATI	YEAR
748	94-98
900SS/SP	91-97
916/916SPS	93-98
Hypermotard / Hyperstrada 821 / 939	13-21
Hypermotard 796	10-12
Monster 1000	2005
Monster 400 / M400	99-07

DUCATI	YEAR
Monster 600 / M600 / M620 / MTS	94-06
Monster 695 / 696	07-14
Monster 795 / 796 / Corsa	10-15
Monster 821	14-21
Monster M750 / M750ie	94-02
Monster M900	93-99
Monster S2R 800	05-07
Scrambler	15-18
Scrambler Desert Sled	19-21
ST2	98-03
ST4 / ST4S / ST4S ABS	99-03

For any questions regarding correct application for your motorcycle, please call ASV Inventions, Inc. **1-714-861-1400**

### INSTALLATION INSTRUCTIONS FOR PART # BRC552 / BRF352



Tools and supplies needed: 1) 11mm wrench, 2) small rubber hammer

**1** Remove the main pivot bolt that holds the lever (img 1 a-b). After the pivot bolt is removed, the lever will detach from the master cylinder (photo 1c).



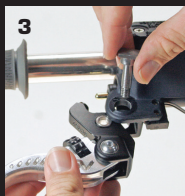
PLEASE SEE OTHER SIDE FOR DETAILED INSTALLATION INSTRUCTIONS

## INSTRUCTIONS FOR PART # BRC52 (continued from other side)

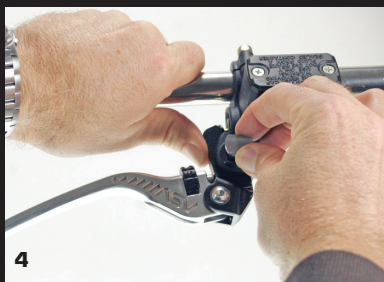
**2** Confirm that your purchase included an additional custom pivot bolt, spacer & locknut (photo 2). These parts will replace the OEM parts that were used with your stock lever.



**3** Place the ASV lever into the master cylinder while aligning the plunger rod into the plunger cup on your ASV lever (photo 3). If KTM, use pliers to remove and replace the OEM plunger rod with the supplied KTM plunger rod



**4** From the top, insert the ASV pivot bolt with the square side up into the pivot hole (photo 4). Use a small rubber hammer to tap the head of the bolt down into the slotted section of the master cylinder.



**5** From the bottom, insert the supplied spacer with the brim side facing down (photo 5a) into the pivot hole. Firmly press until fully seated (photo 5b).



**6** From the bottom, tighten the supplied 11mm locknut, onto the pivot bolt (photo 6). Do not over tighten the locknut as it can cause binding of the lever and master cylinder. Maximum torque on locknut should be five (5) foot-lbs. or sixty (60) inch-lbs.



//////  
**AFTER INSTALLATION** is complete, place your bike in "Neutral". Pull the brake lever several times to ensure the front wheel is properly braking. When the brake lever is not being pulled, the front wheel should spin freely and without any drag. With the key in the "ON" position, pull the front brake lever to check that the rear brake light is on when pulled, and off when the lever is not pulled. If something does not seem right, contact ASV technical support before riding your motorcycle.



//////  
**IMPORTANT:** Do not ride your motorcycle if there is any drag or the front wheel does not spin freely after installation.

**ASV**®

ASV Inventions, Inc.  
17811 Georgetown Lane  
Huntington Beach, CA 92647  
714-861-1400