



ASV Sport Street bike Clutch Lever C5 Part# CRC550 / CRF350

Congratulations on your purchase of an ASV Sport Clutch lever! ASV Inventions recommends that this lever be installed by a certified mechanic. ASV Inventions, Inc. accepts no liability for malfunctions due to improper installation. Please use the chart below to confirm your year, make, and model before attempting installation. If the correct year, make and model of your motorcycle is not listed below, please contact ASV inventions for guidance.

This ASV Sport Clutch lever is compatible with the following motorcycles:

APRILIA	YEAR
RSV Mille/R	04-09
DUCATI	YEAR
749 / S / R	03-06
848 / EVO	08-13
899 / 959 Panigale	13-21
999 / S / R	03-06
1098 / 1198 / S / R	07-12
1199 / 1299 Panigale /R/Superleggera	12-21
Diavel / Xdiavel (all versions)	11-21
Hypermotard 950 / 1100 (all versions)	08-19
Monster S4R/S4Rs	06-08
Monster 1100/1200 (all versions)	09-21
Multistrada 1200 (all versions)	10-21
Panigale V2 / V4 (all versions)	18-21
Streetfighter S / 848	09-15
Streetfighter V4 /S	20-21

HUSQVARNA	YEAR
Vitpilen 701	18-21
KAWASAKI	YEAR
Ninja H2 / H2R (Not SX or Z H2)	15-21
KTM	YEAR
690 Duke	08-13
990 / 1290 Super Duke / R / GT	05-21
RC8 1190 / R	08-15
TRIUMPH	YEAR
Rocket 3	19-21

For any questions regarding correct application for your motorcycle, please call ASV Inventions, Inc. at: 1-714-861-1400.

INSTALLATION INSTRUCTIONS FOR PART # CRC550 / CRF350

Tools and supplies needed:

- 4mm hex key
- 10mm wrench
- Philips screwdriver
- Blue thread lock gel

Check your packaging for several small bags with parts (img 2a). Depending on your bike, you may need to assemble these parts on your ASV lever before completing install. If you did not receive any extra parts, check your lever to see if they have already been assembled.

1 To remove your stock lever, use a 10mm wrench to remove the locknut attached to the main pivot bolt that holds the lever (img 1a). Once the locknut is removed, unscrew the main pivot bolt with a 4mm hex key (img 1b). After the pivot bolt is removed, the lever will detach from the master cylinder.



PLEASE SEE OTHER SIDE FOR DETAILED INSTALLATION INSTRUCTIONS

2 If your motorcycle is a Ducati, Kawasaki, or Aprilia, screw the “D” tab onto the end of the ASV clutch lever (img 2b). If KTM, screw tab “K” instead. Apply a small amount of blue thread lock to the screw to secure.

3 If your motorcycle is a Ducati, Kawasaki, or Aprilia, slide the pair of “D” bushings into the pivot slot (img 3b). If KTM, use the single “K” bushing instead (img 3c). For 15-21 KTM SuperDuke or 08-15 RC8, use “SuperDuke/RC8” bushing,

4 If your motorcycle is a Ducati, Kawasaki, or Aprilia, replace the OEM push rod from the clutch master cylinder with the supplied “D” push rod (img 4).

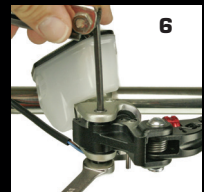
If KTM, use the “K” push rod instead with the larger side facing outward. Make sure the rod does not fall out while you install the lever (img 4b).

5 Align the lever and the master cylinder pivot bolt holes and insert the main pivot bolt (img 5). Tighten until it is snug against the master cylinder. Do not over-tighten, as it could cause the lever to bind in the master cylinder.

6 Install the locknut onto the main pivot bolt and tighten [img 6]. Do not over tighten the locknut as it can cause binding of the lever and master cylinder. Maximum torque on locknut should be five (5) foot-lbs. or sixty (60) inch-lbs.

AFTER INSTALLATION is complete, with the engine off and the bike in neutral, apply the clutch several times while gently moving the bike back and forth to ensure it is functioning properly. There should be no drag or binding when the clutch lever is pulled. Next, turn your key to the “ON” position and without pulling your clutch, attempt to start the bike. It should NOT start. Next, with the clutch applied, attempt to start your bike. It should start. If your bike does not start while it is in gear unless the clutch lever is pulled in, then your new ASV clutch lever is working correctly. If something does not seem right, contact ASV technical support before riding your motorcycle.

IMPORTANT: Be sure to adjust the reach of your lever to fit your hand properly, yet still allow enough movement to properly engage



ASV Inventions, Inc.
 asvinventions.com
 17811 Georgetown Ln
 Huntington Beach, CA, 92647
 714-861-1400